

Edgenuity Assignment Calendar

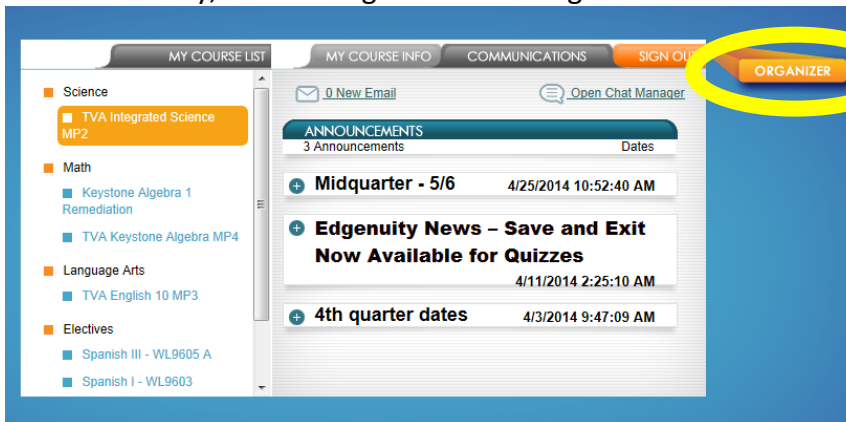
Introduction

The Assignment Calendar is a very helpful tool that provides students a list of activities they need to complete each day in order to stay on track toward meeting their target completion dates. The Assignment Calendar is available for students in the Reports section of the Organizer.

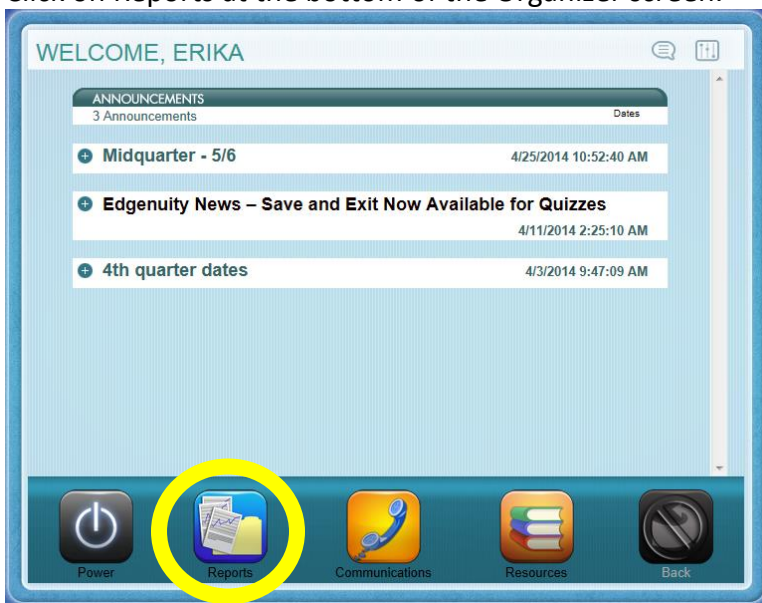
The Assignment Calendar is based on the start and target dates assigned by the teacher. It also specifies which days are not viable assignment days for students (weekends, holidays, etc.). This will be adjusted in the case of a school cancellation or other emergencies.

Viewing the Assignment Calendar

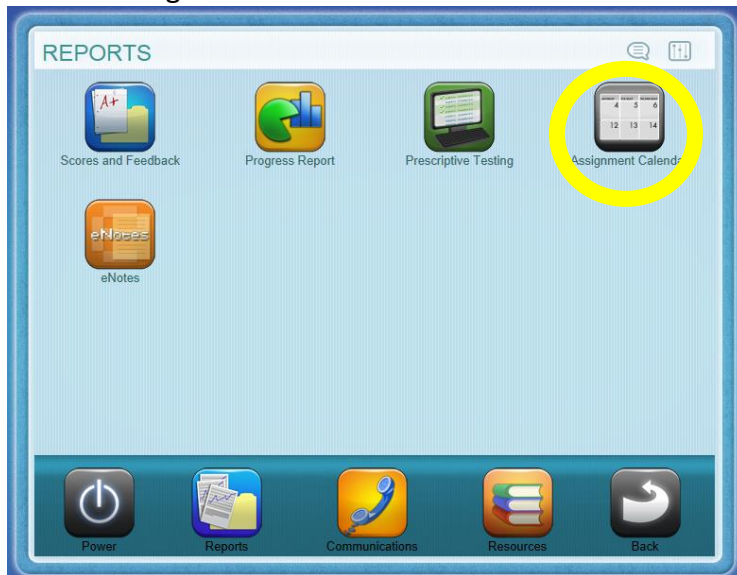
1. From the Lobby, click on Organizer to the right of the screen.



2. Click on Reports at the bottom of the Organizer screen.



3. Click on Assignment Calendar



Understanding the Assignment Calendar

Once a student's Assignment Calendar has been accessed, students are able to move to a different course's assignment calendar by selecting it from the Course menu, and move to a different week in the course by selecting it from the Week menu. The activities in the Assignment Calendar are color coded to make it easier to understand.

1. Green text: Activities the student has completed.
2. Blue text: Activities upon which the student should be working today
3. Gray text (that appears after today's date): Future activities

A screenshot of the "ASSIGNMENT CALENDAR" interface. At the top, there are dropdown menus for "Course: Personal Finance - EL5734" and "Week: Week 1: 5/20/2012 - 5/26/2012". The calendar is organized by day:

- Tuesday, May 22, 2012**
 - Lesson: Introduction**
 - Activities: ✓ Welcome Video (3 min) 0.11% (green)
 - Lesson: Start the Course**
 - Activities: ✓ Interactive Instruction 0.62% (green)
 - Lesson: Set Up Your Computer**
 - Activities: Interactive Instruction 1.14% (gray)
- Wednesday, May 23, 2012**
 - Interactive Instruction 1.14% (blue)
 - Career Connection 1.65% (blue)
 - Lesson: Set Up a Browser and Install 7-Zip**
 - Activities: Interactive Instruction 2.17% (blue)
- Thursday, May 24, 2012**
 - Interactive Instruction 2.17% (gray)
 - Lesson: Research and Citation**